



PROBUS CLUB OF BENTLEIGH

Inc. No. A0015673M - ABN 733 837 961 35 - PSP 58178

NEWSLETTER No.438 September 2025

Committee and Officers for 2025-2026

President	Helen Byron	0419 119 563	Secretary	Lyn Hinton	0401 153 668
Vice President	Mal Carter	0409 771 114	Treasurer	Alan Burns	0400 963 018
Minute Secretary	Margaret Darvell	0402 342 202	Day Trips & Tours	Helen Byron	0419 119 563
Welfare Officer	Sylvia Garrick	0400 820 871	Membership	Jenny Martin	0431 180 182
Speakers	David Halford	0419 338 517	Newsletter	Bruce Hinton	0417 365 817
Website	David Hutt	0412 563 433	Other Activities	Alan Ambrose	0407 711 030

FAREWELL JILL CARR



Jill Carr with Sylvia Garick and Helen Byron at Portarlington

We were saddened to learn of the passing of Jill Carr in August. Although Jill had been a member for a short time, she had been involved in several Club activities.

We all remember Jill telling us about short story writing at a monthly meeting last year and reading one of her stories, which was very entertaining.

This year Jill organised our very successful trip by ferry to Portarlington and our True Crime Tour around Chinatown.

Several of our members attended the funeral service for Jill at which her daughters and friends gave a very upbeat outline of Jill's amazing life.

NEW MEMBER: Today we welcome back Karen Ellis, a former member.

BIRTHDAYS: Congratulations to the following members who celebrate a birthday in September. Alan Burns (9), David Halford (18), Merrilyn Marshall (17), Uta Schiffer (6) and Carol Pritchard (12).

SICK LIST: Unfortunately, David Halford has sustained bruised ribs, however Sheila Murray has recovered from a recent illness. Please let our Welfare Officer, **Sylvia Garrick** (0400 820 871) know if anyone is unwell, injured or in hospital.

QUOTE OF THE MONTH: Some cause happiness wherever they go; others whenever they go.' – *Oscar Wilde*

SPEAKERS

11th September	James Wall	Garden World
9th October	TBA	Brain Research
13th November	Colin Cooper	Kokoda Track

If members have suggestions for future speakers, please contact **David Halford**.

SPECIAL INTEREST GROUPS:

Coffee & Chat:

Our next get together will be on **Thursday 25th September** at about 10.30am in the back lounge of the Benthleigh RSL. Everyone is welcome to stay on for lunch.

Walking Group: (Alan Ambrose 0407 711 030)

Tuesday 16th September	Valley Reserve: In Waimarie Drive Mt Waverley. Meet in the car park at 10.00am. Entry to the reserve is next to the Scout Hall
Tuesday 21th October	Caulfield Park: Enter off Balaclava Rd opposite Holland Rd. Meet in car park near tennis courts at 10.00am.
Tuesday 21st November	Kingston Heath Reserve: Centre Dandenong Rd Cheltenham (opposite DFO) Meet in car park (near traffic lights) at 10.00am

Book Club:

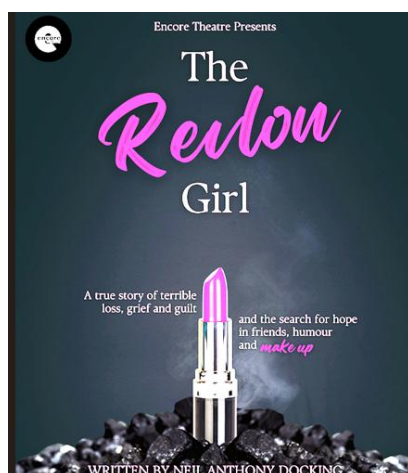
The next regular meeting will be on **Tuesday 7th October** at 11.00am in the back lounge of the Benthleigh RSL. This month's book will be **"West with Giraffes" by Lynda Rutledge**. New readers are most welcome.

Movie Group:

Please register your name with **Margaret Darvell** (0402 342 202). Margaret will advise the date, time and place for the next movie.

Live Theatre

Sylvia Garrick is organising attendance at another live production by the Encore Theatre Company **"The Revlon Girl"** for **Sunday 12th October**. **Cost: Single \$28, Group (10 or more) \$25 per person**. Please give Sylvia your name if you wish to attend.



Revlon Girl is a story of grief, hope, guilt and make-up in the aftermath of the 1966 Aberfan disaster.

An emotional story about the tragic aftermath of the coal mining disaster in Wales when 144 people, including 116 children, were killed when a mountain of coal waste crushed homes and a school in the small Welsh town.

This play is set eight months after the disaster and depicts four bereaved mothers who meet with a Revlon makeup artist in the local pub one evening to talk, cry and even laugh without feeling guilty – all the while navigating how to cope with heart-breaking loss.

TOURS & DAY TRIPS

Pauline Hanley has organised this great day out to Werribee Park Mansion, which is one of the largest and most opulent properties in Victoria. With 60 rooms across several wings, the mansion is in a Renaissance Revival style, with a symmetrical two storey central block, dominant tower, and a ground level arcade on three sides of the block. The Victoria State Rose Garden is located in the grounds of Werribee Park and is internationally acclaimed. It is the winner of the World Federation of Rose Societies Award for Garden Excellence. Spreading over six acres it provides a heritage border from the Mansion.



Werribee Mansion



Victoria State Rose Garden

The day will include morning tea from the bus, a tour of the Mansion, a visit to the Rose Garden and a two-course lunch at the Werribee RSL. The Trip will depart the Bentleigh RSL at 8-30am and return there at 3-30pm.

Cost: \$90 per person for a minimum of 20 members. If we can get 30 members it will be \$73. If you wish to go please give your name at the front desk at the Monthly Meeting.

Tours and Trip for Next Year - 2026

A Survey was attached to the July Newsletter asking for indications of possible tours and trips of interest to members for 2026. If you have not already done so, could you please mark an activity of interest on the Survey and either email to **Di Stahmer** (distahmer@bigpond.com) and **Bruce Hinton** (bl.hinton@bigpond.com), or hand it in at the front desk prior to a General Meeting.

LUNCHESES & DINE OUTS

A large group of members on two tables gathered for a very convivial lunch at the Arcobar in Heatherton organised by **Helen Byron** on Thursday 21st August. They enjoyed a main course ordered from the Classic menu and a complimentary glass of Wine, Beer, soft drink, tea or filtered coffee. It is always a great lunch albeit large platefuls at the Arcobar.

Lunch – Thursday 18th September, Elstenwick Hotel 12.00 – 12.30pm, 259 Brighton Road Elwood. Choose from the extensive menu on the Day and pay for what you order. All Drinks at Members Expense. If you are interested in attending please add your name to the list at the General Meeting front desk.

Lunch - Saturday 11th October. Picnic in the Park This is to celebrate Probus Month. It will be held in the Picnic Shelter at Allnut Park Wheatley Road Bentleigh at 12 to 12-30pm. BYO Lunch, drinks and folding chairs. We have invited members from the Glen Eira, Moorleigh and Murrumbene Probus Clubs to join us for the Picnic. If you are interested in attending please add your name to the list at the General Meeting front desk.

Lunch – Thursday 16th October, Bentleigh Probus Anniversary Lunch at the Buckingham International Motel, 1130 Nepean Highway, Highett, Victoria, 3190, **Cost: \$55 per person for a two course meal.** Drinks at own expense. If you are interested in attending please add your name to the list at the General Meeting front desk.

Dine Out – Friday 7th November, 6-30 pm, Venue to be announced.

USEFUL HINTS

Avoiding Falls in the Home

The following is part of an interesting article from this month's **Active Retirees Magazine**. "*Staying Steady, Safe and Independent in the Home*". (See the link on our Club website)

"Most falls occur on level ground not down stairs or from ladders. Small changes in the home can go a long way to prevention. Keep walkways clear of clutter, remove loose rugs and ensure rooms are well lit. In high-risk areas such as bathrooms and on steps, installing grab rails or non-slip mats adds another layer of protection. Even simple adjustments such as rearranging furniture to create wider pathways can make moving around safer."

MANAGEMENT MATTERS

Club Web Site: <https://www.probusouthpacific.org/microsites/bentleighc/Welcome>. **Note:** All activities listed in this newsletter can be viewed on the Club's website. This site has a lot of very useful information including photographs from trips and lunches, "Active Retirees Magazine", "Victorian Probian Magazine".

Editor's Note: The Editor is always keen to receive feedback, comments, corrections etc. in relation to this Newsletter. Also, if members have any ideas and suggestions for new Section additions to this Newsletter, or news items of possible membership interest please send to bl.hinton@bigpond.com or phone 0417365817.

JUST FOR LAUGHS: 'People who think they know everything are a great annoyance to those of us who do.' – Isaac Asimov.

NEXT MEETING – Thursday 9th October 2025 – 10.30am at the Bentleigh RSL