

Our Outings include regular visits to local venues for Dinner and occasional Lunches & Breakfasts

Plus details follow of recent Day Trips via Coach and Self Drive

NATIONAL GALLERY OF VICTORIA

St Kilda Road, Melbourne



The NGV will partner with the British Museum to present PHARAOH, an exhibition that celebrates three thousand years of ancient Egyptian art and culture.

Includes Lunch at La Camera Restaurant (at Southgate) which includes a glass of wine or soft drink

DOLPHIN RESEARCH CENTRE

plus

PENINSULA HONEY FARM



The Dolphin Centre in Hastings has highly interesting programs including great videos of Victoria's marine life that you won't see anywhere else

LUNCH AT STEEPLES RESTAURANT IN MORNINGTON

Enjoy a talk about the making of honey followed by free tastings of honey produced on site at Peninsula Honey Farm.

TOUR OF MELBOURNE AIRPORT



**Tours last approx one hour and explain operations of airport.
Entire tour is indoors so no problems with winter weather.**

Tours will be followed by 2 course Lunch at the Restaurant at Moonee Valley Racecourse.

KERRISDALE MOUNTAIN RAILWAY
plus
VIETNAM VETERANS WALK, SEYMOUR



The knowledgeable owners tell their entertaining story of building the railway plus details of local history and a 40 minute train ride which has marvellous views across valleys and mountain chains.

Includes Morning Tea

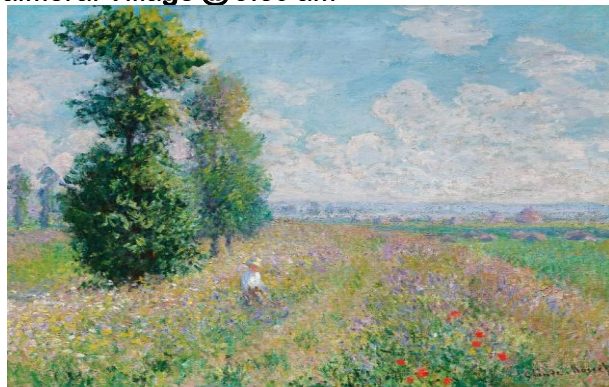
Includes Bistro Lunch at Railway Club Hotel in Seymour

The Vietnam Veterans Walk is made up of glass panels with the names in alphabetical order of every Serviceman and Woman who served in their various capacities.

WH PROBUS & BALMORAL DAY TOUR
THURSDAY 28th AUGUST 2025

NATIONAL GALLERY OF VICTORIA
FRENCH IMPRESSIONISTS EXHIBITION

Coach leaves Balmoral Village @ 9.30 am



The 2025 Melbourne Winter Masterpieces® exhibition *French Impressionism* charts the trajectory of the late-nineteenth century artistic movement, including **Claude Monet, Pierre-Auguste Renoir, Edgar Degas, Camille Pissarro, Edouard Manet, Mary Cassatt, Berthe Morisot**. Presented by the NGV in partnership with the Museum of Fine Arts, Boston (MFA), an institution renowned world-wide for its rich holdings of Impressionist paintings, the exhibition features more than 100 iconic paintings, including additional works never-before-seen in Australia.

LUNCH AT LA CAMERA RESTAURANT (AT SOUTHGATE)
WHICH INCLUDES A GLASS OF WINE or SOFT DRINK

COST \$ 85.00 WHICH INCLUDES ENTRY FEE AND LUNCH

**WH PROBUS & BALMORAL VILLAGE
5 DAYS CANBERRA TOUR**

Monday 27th October to Friday 31st October 2025



**Cost \$985.00 per person twin share
plus \$300.00 per person single supplement**