



## PORT DOUGLAS & DISTRICT PROBUS CLUB

### January 2026 Newsletter

Port Douglas & District Probus Club was formed after an expression of interest held at the Port Douglas Neighbourhood Centre on 26<sup>th</sup> August 2024

#### President's Message:

Dear Probus Members,

#### HAPPY NEW YEAR! Bring on 2026!

On behalf of all the committee members I wish you a happy and healthy year ahead, filled with lots of special memory making moments with your loved ones – family and friends, and of course with your Probus family too!

We capped off 2025 with a fabulous lunch at Osprey Restaurant at Thala Beach Lodge. We had a great member turn out and lots of fun together – make sure you check out all the photos. Thank you all for your attendance and making it such a great event!

2026 will start with three closely consecutive opportunities:

1. The next meeting is January 19. Instead of a guest speaker we will have a longer social catch up to share Christmas and New Year stories whilst enjoying a special Tin Shed Morning Tea - \$5 per head – please RSVP to me and pay as you enter the meeting.
2. January 21: Ramada Resort, Port Douglas: Happy Hour 4-6 pm followed by optional dinner.
3. February 3: To celebrate 50 years since the inception of Probus South Pacific, don't miss out on our informative and fun Mini Travel Expo at Club Mossman from 10 am – 12 noon TBC. Learn about travel options and discounts through Probus Travel which you are entitled to as a member; hear about what trips a couple of other clubs have done together, go on a virtual journey to China, plus more!! Stay tuned for more information!

I look forward to meeting up again with you all during this year. Please encourage your friends to become members and share in the retirement (or semi-retirement) Probus fun!! It's our club so let's make it the best we can!

**Stay safe and stay connected!!**

**Susan Stafford** 😊

**(Foundation President)**

#### Management Committee

**Susan Stafford**

President

Newsletter Officer

M: 0403 169 859

E: mcsusan2000@yahoo.com

**Julie Borbiri**

Vice President

M: 0417 726 359

**Christopher Saint**

Secretary

Newsletter Officer

M: 0438 383 464

**David Campbell**

Treasurer

M: 0408 657 749

**Dusty Howman**

Guest Speaker Officer

Publicity Officer

Newsletter Officer

M: 0407 837 269

**Toni Hickey**

Outings/Activities Officer

M: 0437 320 340

**Lorraine Potter**

Outings/Activities Officer

M: 0427 993 392

**Emily Morgan**

Membership Officer

M: 0408 099 940

**Wendy Crossman**

Wellbeing Officer

M: 0499 035 666

**Meeting day/time:** 4<sup>th</sup> Monday of every month at 9:30 am (except January which is 3<sup>rd</sup> Monday)

**Meeting venue:** Tin Shed – Douglas Community & Sports Club Inc., 7 Ashford Ave, Port Douglas

*Private and Confidential for Probus use only and is not to be used for any other purpose.*

## Membership fees

The Probus financial year is 1<sup>st</sup> April to 31<sup>st</sup> March. The annual fee of \$50.00 is due on 1<sup>st</sup> April each year. Members joining at any other time during the year will pay a pro rate price – please ask one of the committee. Fees can be paid by bank transfer to:

**Bendigo Bank**

**BSB: 633 000**

**Account: 223 888 819**

**Please also include your full name in the reference box when transferring so we can track who has paid!**

**PLEASE NOTE: The bank account number has changed.**

## Need Help with Technology?

Port Douglas Neighbourhood Centre is delighted to announce an exciting expansion of technical assistance offerings for the local community. Fortnightly programs on Monday afternoons will alternate between two formats:

### **Be Connected to Technology**

Our long-standing 'bring your own device' sessions invite attendees to bring their own smartphone, tablet, or laptop—along with any tech questions.

### **Click and Connect**

This new initiative features easy, step-by-step tutorials, designed to build confidence and spark conversation. Each session will focus on a specific topic, with plenty of time for questions and hands-on help.

The sessions are offered for an optional donation, and you need to book by calling **07 4099 5518**.

## MEETINGS & EVENTS

### Meetings

**January 19<sup>th</sup> Meeting:** Special Tin Shed morning tea - \$5 per head & please RSVP for catering purpose.

### Social Events

#### **January 21<sup>st</sup> - HAPPY HOUR**

Ramada Resort, Port Douglas

4.00pm -6.00pm

Optional dinner afterwards

**February Tuesday 3<sup>rd</sup> 2026 @ 10.00 am (TBC)**

#### **Mini Travel Expo**

Club Mossman

More details to follow

### Recent Social Events

**December Friday 12<sup>th</sup> 2025**

#### **Christmas lunch**

The Venue was the Osprey Restaurant at Thala Beach Lodge

There was a huge turnout for this event

### Proposed Social Events

These will be announced in the near future.  
Keep posted for further announcements!

**We're all part of the Probus Community  
Now let's get started having fun  
with some exciting activities.**

**Why not stay at our venue  
after the meeting to get  
to know each other better?**



**Next meeting dates/times  
19/01/2026 – 9.30am**



View Photos on Website [https://www.probussouthpacific.org/microsites/portdouglas/About\\_Us](https://www.probussouthpacific.org/microsites/portdouglas/About_Us)

**Meeting day/time:** 4<sup>th</sup> Monday of every month at 9:30 am (except January which is 3<sup>rd</sup> Monday)

**Meeting venue:** Tin Shed – Douglas Community & Sports Club Inc., 7 Ashford Ave, Port Douglas  
*Private and Confidential for Probus use only and is not to be used for any other purpose.*

## SPOTLIGHT ON.....



### Toni Hickey



My name is Toni, I was born, raised and worked in Hobart, Tasmania. So spent many years in the cool climates down south which resulted in an over 3,500 km move to Far North Queensland, on retirement, in December 2014. I wanted warm and my husband was happy to follow me!

A large part of my working life was within the University sector, in particular managing student administration and services across multiple campuses in Tasmania as well as Sydney. UTAS also had teaching arrangements in Singapore, China and Kuala Lumpur. In the last 2 years before retirement, I undertook a lead change management role in the implementation of a new student system for UTAS. This was a major project for the university involving the transfer of paper historical student records dating from 1893 (UTAS was founded in 1890) through to the present day.

Arriving in Cooya Beach in December 2014, was a significant change and new chapter in our lives as we had only visited once before. Over the next 6 years we immersed ourselves in the community, made some truly wonderful and lifelong friendships and ventured out on many road trips.

Early on I became involved in the Port Douglas Neighbourhood Centre as a Management Committee member, I also participated in petanque, tai chi and golf and taught Line Dancing.

In 2020, with COVID challenging us all, we made the decision to relocate to Perth, Western Australia where our 3 children had settled. This turned out to be a significant decision, as sadly, my husband passed away within 10 months, so we had some very precious family time.

In October 2022, I returned to Port Douglas. I had continued my involvement with the Port Douglas Neighbourhood Centre whilst in Perth, utilising zoom, phone and email interactions. And since returning I have also been involved as a U3A Committee member and Pink in the Tropics Committee member.

I play mahjong, undertake Bollywood dancing, Bookclub, petanque and table tennis and I teach Line Dancing. And I have really enjoyed my time, as an activity and event coordinator, on the Probus Committee and meeting so many wonderful people.

I look forward to an exciting 2026 for our Probus family!

**Meeting day/time:** 4<sup>th</sup> Monday of every month at 9:30 am (except January which is 3<sup>rd</sup> Monday)

**Meeting venue:** Tin Shed – Douglas Community & Sports Club Inc., 7 Ashford Ave, Port Douglas

*Private and Confidential for Probus use only and is not to be used for any other purpose.*

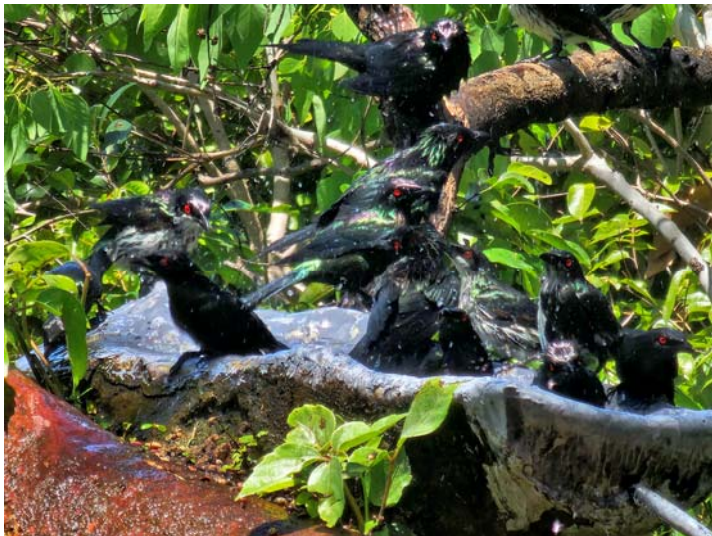


## PROBUS OUTING

### Thala Christmas Break up



Thala Beach Eco Resort Lobby



Metallic Starlings put on a show for us



Beautiful beaches that provided our backdrop

**Meeting day/time:** 4<sup>th</sup> Monday of every month at 9:30 am (except January which is 3<sup>rd</sup> Monday)

**Meeting venue:** Tin Shed – Douglas Community & Sports Club Inc., 7 Ashford Ave, Port Douglas

*Private and Confidential for Probus use only and is not to be used for any other purpose.*



## Thala Christmas Break up



Jayne and Julie attempting to open a Bon Bon



Anna enjoying the afternoon



An impromptu line dance performed by the ladies from the dance group was joined by several other members for a fun afternoon

**Meeting day/time:** 4<sup>th</sup> Monday of every month at 9:30 am (except January which is 3<sup>rd</sup> Monday)

**Meeting venue:** Tin Shed – Douglas Community & Sports Club Inc., 7 Ashford Ave, Port Douglas

*Private and Confidential for Probus use only and is not to be used for any other purpose.*



## Thala Christmas Break up



There were several tables to cater for the large gathering



Em and Toni mixing with Pam and Lydia



Susan making a speech



Kevin & Sue enjoying the afternoon



Neil



Pam, Lorraine and John

**Meeting day/time:** 4<sup>th</sup> Monday of every month at 9:30 am (except January which is 3<sup>rd</sup> Monday)

**Meeting venue:** Tin Shed – Douglas Community & Sports Club Inc., 7 Ashford Ave, Port Douglas

*Private and Confidential for Probus use only and is not to be used for any other purpose.*